



Chromosome Analysis Report: 031457

Date Reported: Thursday, March 03, 2016

Cell Line: Cell Line 0108 Col 13

Passage#: 19

Date of Sample: 2/24/2016

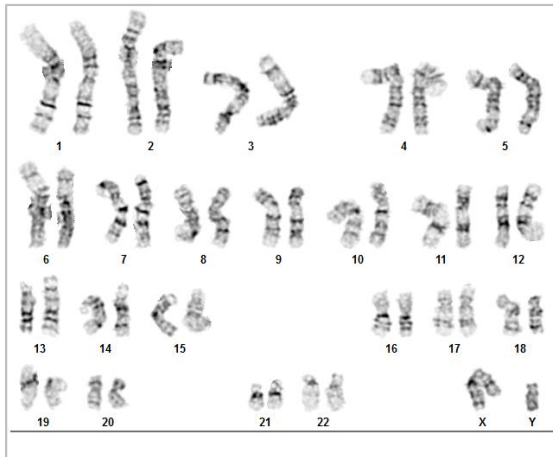
Specimen: iPSC

Results: 46,XY

Cell Line Gender: Male

Reason for Testing: Quality Control of iPSCs

Investigator: Teeya Raghunandan, Mount Sinai



Cell: 24

Slide: 5

Slide Type: Karyotype

Total Counted: 20

Total Analyzed: 8

Total Karyogrammed: 4

Band Resolution: 425 - 475

Interpretation:

This is a normal karyotype. No clonal abnormalities were detected at the stated band level of resolution.

NOTE: The karyotype of this specimen is XY; the test requisition form accompanying this specimen indicates a female cell line. Please verify.

Completed by: Erica Schutter, CG(ASCP)

Reviewed and Interpreted by: Karen Dyer Montgomery, PhD, FACMG

A signed copy of this report is available upon request.

Date: _____ **Sent By:** _____ **Sent To:** _____ **QC Review By:** _____

Limitations: This assay allows for microscopic visualization of numerical and structural chromosome abnormalities. The size of structural abnormality that can be detected is >3-10Mb, dependent upon the G-band resolution obtained from this specimen. For the purposes of this report, band level is defined as the number of G-bands per haploid genome. It is documented here as "band level", i.e., the range of bands determined from the four karyograms in this assay. Detection of heterogeneity of clonal cell populations in this specimen (i.e., mosaicism) is limited by the number of metaphase cells examined, documented here as "# of cells counted".

This assay was conducted solely for listed investigator/institution. The results may not be relied upon by any other party without the prior written consent of the Director of the WiCell Cytogenetics Laboratory. The results of this assay are for research use only. If the results of this assay are to be used for any other purpose, contact the Director of the WiCell Cytogenetics Laboratory.

Unless otherwise mutually agreed in writing, the services provided to you hereunder by WiCell Research Institute, Inc. ("WiCell") are governed solely by WiCell's Terms and Conditions of Service, found at www.wicell.org/privacyandterms. Any terms you may attach to a purchase order or other document that are inconsistent, add to, or conflict with WiCell's Terms and Conditions of Service are null and void and of no legal force or effect.